

QUICK REFERENCE GUIDE for INFECTIOUS DISEASES/CONDITIONS and REQUIRED PRECAUTIONS

I. PURPOSE

The following table lists selected infectious diseases/conditions and delineates the room placement, specific precautions and pertinent instructions. It provides a reference for nurses/healthcare workers (HCWs) and physicians responsible for the appropriate placement and management of patients with infectious diseases and conditions. The table is not intended to be all inclusive. If a disease or condition is not listed, use Standard Precautions and contact the Infection Prevention & Control Department (IPCD) for assistance.

II. POLICY

Standard/Universal Precautions and good hand hygiene practices are used by all HCWs for all patients regardless of diagnosis. Additional precautions/isolation is initiated as indicated in Appendices A and B below.

III. IMPLEMENTATION

- A. If a disease or condition is **not** listed in Appendix A, use Standard Precautions. The Appendix is not intended to be all inclusive, but rather a guideline for commonly recognized conditions or diseases. The yellow highlighted conditions are those most commonly requiring precautions/isolation.
- B. If a patient requires Respiratory Precautions/Isolation, see Appendix C to determine if a negative airflow room is necessary.
- C. A private room is recommended for any patient if the nurse/HCW determines that the patient's secretions/excretions cannot be contained within the patient's immediate environment.
- D. For more information, refer to the policies on [Standard Precautions](#), [Contact Precautions](#), [Respiratory Precautions](#) and [Droplet Precautions](#) elsewhere in Section 5 of the *Infection Control Manual*.
- E. For questions, contact the IPCD (extension 5-1106 or pager 16167).

Appendices:

- Appendix A: Quick Reference Guide for Infectious Diseases/Conditions and Required Precautions
- Appendix B: Quick Reference Guide for Placement of Patients: **Negative** Airflow Rooms
- Appendix C: Limited Negative Airflow Room Prioritization Scheme
- Appendix D: Quick Reference Guide for Placement of Patients: **Positive** Airflow Rooms

Approved by: Infection Control Committee, 2/12
Quality, Patient Safety and Effectiveness Committee, 3/12
Stanford Hospital & Clinics Medical Executive Committee, [pending]
Stanford Hospital & Clinics Board Credentials, Policies and Procedures Committee, [pending]

Original Date: 7/91
Reviewed Date: 8/93, 1/98
Revised Date: 6/97, 1/01, 3/02, 8/03, 12/04 (addition of Appendix B), 10/05, 8/06, 10/07, 2/08, 6/09, 8/09, 2/10, 9/10, 3/11, 2/12, 7/12

This document is intended for use by staff of Stanford Hospital & Clinics.
No representations or warranties are made for outside use.
Not for outside reproduction or publication without permission.
Direct inquiries to: Infection Prevention & Control Department (650) 725-1106
Stanford Hospital & Clinics
Stanford, CA 94305

Appendix A

**QUICK REFERENCE GUIDE for INFECTIOUS DISEASES/CONDITIONS and
REQUIRED PRECAUTIONS**



Highlighted conditions/diseases are those frequently asked about.

IF A DISEASE OR CONDITION IS NOT LISTED IN THIS TABLE USE STANDARD PRECAUTIONS				
DISEASE/CONDITION	PRECAUTIONS	ROOM PLACEMENT	SPECIAL INSTRUCTIONS	DURATION OF PRECAUTIONS
Abscess, drainage contained	Standard	Any room		
Abscess, major, drainage uncontained	Contact	Private room		Until drainage stops or is contained with dressing
Acquired Immunodeficiency Syndrome (AIDS)	Standard	Any room		
Adenovirus • Gastroenteritis • Pneumonia	Standard Droplet and Contact	Any private room if diarrhea is contained. Private room if diarrhea is not contained.	Contact Precautions may be used at the discretion of the nurse/HCW if the patient's hygiene is poor and the environment is likely to be soiled, or to control institutional outbreaks. • Surgical style mask with face shield or surgical style mask plus goggles for persons entering room. • Surgical style mask for patients when leaving room. • Promptly notify the IPCD,* x 5-1106 or pager 16167 • For more information see ICM Policy 5.30, Contact Precautions and 5.41, Droplet Precautions .	Durations of illness
Amebiasis	Standard	Any room		
Anthrax, • Cutaneous • Pulmonary	Standard Standard	Any room Any room	Contact Precautions if large amounts of drainage cannot be contained with dressings	
Antibiotic-associated colitis- See <i>Clostridium difficile</i>				
Aspergillosis	Standard	Any room		
Avian Influenza-See <i>Influenza, Pandemic</i>				

IF A DISEASE OR CONDITION IS NOT LISTED IN THIS TABLE USE STANDARD PRECAUTIONS				
DISEASE/CONDITION	PRECAUTIONS	ROOM PLACEMENT	SPECIAL INSTRUCTIONS	DURATION OF PRECAUTIONS
Botulism	Standard	Any room		
<i>Burkholderia cepacia</i>-infection or colonization, See Multi-Drug Resistant Organisms (MDRO)				
Campylobacteriosis See Gastroenteritis				
Cat Scratch Fever	Standard	Any room		
Chickenpox (Varicella)	Respiratory and Contact	Private room, negative air pressure room with anteroom. Keep door closed.	<ul style="list-style-type: none"> • N95 mask required for all staff. • Surgical mask required for all visitors. • Wear gown and gloves for direct contact with lesion material. • Surgical style mask for patients when leaving room. • For more information see <i>Infection Control Manual (ICM) Policy 5.40, Respiratory Precautions</i> and 6.10, Chickenpox and Herpes Zoster Patient Management and Exposure Follow-up. 	Until all crops of lesions are crusted over
Chickenpox exposed patient with: <ul style="list-style-type: none"> • Negative history for chickenpox or • Chickenpox vaccine and negative Varicella titer. 	Respiratory and Contact	Private room, negative air pressure room with anteroom. Keep door closed.	<ul style="list-style-type: none"> • Persons who have not had chickenpox should not enter room for any reason. • N95 mask required for staff. • Surgical mask required for all visitors. • Wear gown and gloves for contact with lesion material. • Surgical style mask for patients when leaving room. • For more information see <i>ICM Policy 5.40, Respiratory Precautions</i> and 6.10, Chickenpox and Herpes Zoster Patient Management and Exposure Follow-up. 	Exposed susceptible patients should be placed in respiratory isolation from day 8 post initial exposure to day 21(day 28 if VZIG given) post last exposure.
Cholera See Gastroenteritis				

IF A DISEASE OR CONDITION IS NOT LISTED IN THIS TABLE USE STANDARD PRECAUTIONS				
DISEASE/CONDITION	PRECAUTIONS	ROOM PLACEMENT	SPECIAL INSTRUCTIONS	DURATION OF PRECAUTIONS
<i>Clostridium difficile</i> diarrhea	Contact	Private room	<ul style="list-style-type: none"> Avoid use of shared equipment Use Purple Bleach Protocol Contact Precaution sign Bleach Protocol used: <ul style="list-style-type: none"> IN room from which patient transferred Upon discharge Isolation discontinued For more information see <i>ICM</i> Policy 5.30, Contact Precautions 	<ul style="list-style-type: none"> 48 hours after diarrhea has resolved and Off antibiotics for <i>C. diff</i> treatment for 48 hours
Diarrhea being treated empirically for Hx of <i>Clostridium difficile</i> now negative	Contact	Private room		Until diarrhea resolved
Coccidioidomycosis (Valley Fever)	Standard	Any room		
Creutzfeld-Jakob Disease	Standard	Any room	Refer to OR department-specific policies for additional information related to the OR.	
Cryptococcosis	Standard	Any room		
Cryptosporidiosis See <i>Gastroenteritis</i>				
Cystic Fibrosis without any multi-drug resistant organism	Standard	Private room	Do not cohort with another cystic fibrosis patient.	
Cytomegalovirus (CMV)	Standard	Any room		
Diarrhea, controlled etiology unknown	Standard	Any room	Patient is able to use the bathroom.	
Diarrhea, uncontrolled etiology unknown	Standard	Private room	Contact Precautions may be used at the discretion of the nurse/HCW if the patient is incontinent and the environment is likely to be soiled.	Duration of illness, patient no longer soils environment
Diphtheria, Cutaneous	Contact	Private room	<ul style="list-style-type: none"> Promptly notify the IPCD*, x 5-1106 or pager 16167 Report promptly to Santa Clara County Health Department (408) 885-4214. For more information see <i>ICM</i> Policy 5.30, Contact Precautions 	Until 2 cultures taken at least 24 hours apart are negative for <i>Corynebacterium diphtheriae</i> .

IF A DISEASE OR CONDITION IS NOT LISTED IN THIS TABLE USE STANDARD PRECAUTIONS				
DISEASE/CONDITION	PRECAUTIONS	ROOM PLACEMENT	SPECIAL INSTRUCTIONS	DURATION OF PRECAUTIONS
Diphtheria, Pharyngeal	Droplet	Private room, no special ventilation required. Door may remain open.	<ul style="list-style-type: none"> Surgical style mask with face shield or surgical style mask plus goggles for all persons entering room. Patient to wear surgical style mask when leaving room. Promptly notify the IPCD*, x 5-1106 or pager 16167 Report promptly to Santa Clara County Health Department (408) 885-4214. For more information see ICM Policy 5.41, Droplet Precautions. 	Until 2 cultures from both nose and throat taken at least 24 hours apart are negative for <i>Corynebacterium diphtheriae</i> .
Drug Resistant Microorganisms, See Multi-Drug Resistant Organisms (MDRO's)				
Ebola-Marburg Virus See Hemorrhagic Fever				
Encephalitis (viral)	Standard	Any room		
ESBL (Extended spectrum beta lactamase) See MDRO				
Gas Gangrene	Standard	Any room		
Gastroenteritis (not listed elsewhere) caused by: <ul style="list-style-type: none"> Campylobacter sp Cholera Cryptosporidium sp E. coli (O157:H7) Giardia Rotavirus Salmonella sp Shigella sp Vibrio Viral 	Standard	Any room if diarrhea is contained. Private room if diarrhea is not contained.	Contact Precautions may be used at the discretion of the nurse/HCW if the patient's hygiene is poor and the environment is likely to be soiled or to control institutional outbreaks.	Durations of illness
German Measles See Rubella				
Giardiasis See Gastroenteritis				
Haemophilus influenzae meningitis, See Meningitis				
Hansen's Disease (leprosy)	Standard	Any room		

IF A DISEASE OR CONDITION IS NOT LISTED IN THIS TABLE USE STANDARD PRECAUTIONS				
DISEASE/CONDITION	PRECAUTIONS	ROOM PLACEMENT	SPECIAL INSTRUCTIONS	DURATION OF PRECAUTIONS
Hemorrhagic Fevers, including Lassa and Ebola virus fevers	Respiratory and Contact	Private room, negative air pressure with anteroom.	<ul style="list-style-type: none"> • Only essential personnel should enter the patient room. • N95 Respirator mask for all persons entering room. • For high risk procedures use PAPR (see ICM 9.10) • Protective eyewear for care of patients who are coughing, vomiting, bleeding, disoriented or uncooperative, and during the performance of invasive procedures. • Wear gown, gloves and shoe covers to enter room. • Don and remove protective wear in the anteroom. • Discard <i>all</i> waste in red bags. • Promptly notify the IPCD*, ext. 5-1106 or pager 16167 • Report promptly to Santa Clara County Health Department (408) 885-4214. 	Duration of hospitalization
Hepatitis A <ul style="list-style-type: none"> • Continent patient • Incontinent patient 	Standard Contact	Any room Private room		Until continent
Hepatitis B, C, D	Standard	Any room	See hemodialysis department-specific policies for additional information	
Herpes Simplex	Standard	Any room		
Herpes Zoster (Shingles or Varicella Zoster) <ul style="list-style-type: none"> • Disseminated disease (including pneumonia) in any patient • Localized disease in an immunocompromised patient 	Respiratory and Contact	Private room, negative air pressure room with anteroom. Keep door closed.	<ul style="list-style-type: none"> • Persons who have not had chickenpox should not enter room for any reason. • N95 mask required for staff. • Surgical mask required for all visitors. • Wear gown/gloves for direct contact with lesion material. • Surgical style mask for patients when leaving room. • For more information see ICM Policy 5.30, Contact Precautions, 5.40, Respiratory Precautions and 6.10, Chickenpox, Herpes Zoster Patient Management and Exposure Follow-up. 	Duration of illness and until all lesions are completely crusted over.

IF A DISEASE OR CONDITION IS NOT LISTED IN THIS TABLE USE STANDARD PRECAUTIONS				
DISEASE/CONDITION	PRECAUTIONS	ROOM PLACEMENT	SPECIAL INSTRUCTIONS	DURATION OF PRECAUTIONS
Herpes Zoster (Shingles or Varicella Zoster) Localized in a patient with an intact immune system with lesions that can be contained/covered and lesions confined to 1 dermatome	Standard	Private room	<ul style="list-style-type: none"> Persons who have not had chickenpox should not enter room for any reason. Place a notice on the door stating only immune staff should enter the room. No mask necessary for immune caregivers/visitors. Wear gown/gloves for direct contact with lesion material. 	Until all lesions are completely crusted over
Highly Resistant Organism (refer to MDRO)				
Human Metapneumovirus, See <i>Metapneumovirus (Human)</i>				
Impetigo	Contact	Private room.	For more information see <i>ICM</i> Policy 5.30, Contact Precautions	For 24 hours, after effective antibiotic therapy is initiated
Influenza: Type A, B, C, including H1N1	Droplet	Private room or may be cohorted with patient with like type. No special ventilation. Door may remain open.	<ul style="list-style-type: none"> Surgical style mask with face shield or surgical style mask plus goggles for persons entering room. Surgical style mask for patients when leaving room. For more information see <i>ICM</i> Policy 5.41, Droplet Precautions. 	<ul style="list-style-type: none"> For 7 days after onset of symptoms and Until 24 hours after resolution of fever and respiratory symptoms whichever is longer and no longer receiving antiviral therapy (e.g., Tamiflu).

IF A DISEASE OR CONDITION IS NOT LISTED IN THIS TABLE USE STANDARD PRECAUTIONS				
DISEASE/CONDITION	PRECAUTIONS	ROOM PLACEMENT	SPECIAL INSTRUCTIONS	DURATION OF PRECAUTIONS
Influenza, (Avian or Novel)	Respiratory and Contact	Private, room negative air pressure room with ante-room. Keep door closed.	<ul style="list-style-type: none"> • N95 respirator mask for hospital personnel entering room. • PAPR for high risk procedures (see ICM 9.10). • Requires fit testing by designated individual. See manager for more information. • Patient to wear surgical style mask when leaving room. • Promptly notify the IPCD*, ext. 5-1106 or pager 16167. • Report promptly to Santa Clara County Health Department (408) 885-4214. • For more information see ICM Policy 6.90, SARS Precautions/Isolation. 	Duration of hospitalization
Kawasaki Syndrome	Standard	Any room		
Lassa Fever, See Hemorrhagic Fever				
Legionellosis	Standard	Any room		
Lice, See Pediculosis				
Listeriosis	Standard	Any room		
Malaria	Standard	Any room		
Measles (Rubeola)	Respiratory	Private room, negative air pressure room with an anteroom. Keep door closed.	<ul style="list-style-type: none"> • Persons who have not had measles should not enter room for any reason. • N95 mask required for all staff. • Promptly notify the IPCD*., x 5-1106 or pager 16167 • Report promptly to Santa Clara County Health Department (408) 885-4214. • For more information see ICM Policy 5.40, Respiratory Precautions and 6.20, Measles Patient Management and Exposure Follow-up. 	For 5 days after onset of rash. If patient is immunocompromised, for duration of hospitalization. Room may not be occupied for 3 hours after patient is discharged.

IF A DISEASE OR CONDITION IS NOT LISTED IN THIS TABLE USE STANDARD PRECAUTIONS				
DISEASE/CONDITION	PRECAUTIONS	ROOM PLACEMENT	SPECIAL INSTRUCTIONS	DURATION OF PRECAUTIONS
Meningitis due to <i>Haemophilus influenzae</i>	Droplet	Private room, no special ventilation required. Door may remain open.	<ul style="list-style-type: none"> • Surgical style mask with face shield or surgical style mask plus goggles for persons entering room. • Surgical style mask for patients when leaving room. • Promptly notify the IPCD*, x 5-1106 or pager 16167. • Report promptly to Santa Clara County Health Department (408) 885-4214. • For more information see ICM Policy 5.41, Droplet Precautions. 	For 24 hours after appropriate antibiotic therapy is initiated
Meningitis, suspected or confirmed, due to <i>Neisseria meningitidis</i>	Droplet	Private room, no special ventilation required. Door may remain open.	<ul style="list-style-type: none"> • Surgical style mask with face shield or surgical style mask plus goggles for persons entering room. • Surgical style mask for patients when leaving room. • Promptly notify the IPCD,* x 5-1106 or pager 16167 • Report promptly to Santa Clara County Health Department (408) 885-4214. • For more information see ICM Policy 5.41, Droplet Precautions and 6.30, Meningococcal Meningitis or Meningococemia Exposure Follow-up. 	For 24 hours after appropriate antibiotic therapy is initiated
Meningitis, other bacterial such as <i>Listeria</i> or Strep	Standard	Any room		
Meningitis (Viral)	Standard	Any room		
Meningococcal Infections (meningitis, meningococemia, pneumonia)	Droplet	Private room, no special ventilation required. Door may remain open.	<ul style="list-style-type: none"> • Surgical style mask with face shield or surgical style mask plus goggles for persons entering room. • Surgical style mask for patients when leaving room. • Promptly notify the IPCD,* x 5-1106 or pager 16167 • Report promptly to Santa Clara County Health Department (408) 885-4214. • For more information see ICM Policy 5.41, Droplet 	For 24 hours after appropriate antibiotic therapy is initiated

IF A DISEASE OR CONDITION IS NOT LISTED IN THIS TABLE USE STANDARD PRECAUTIONS				
DISEASE/CONDITION	PRECAUTIONS	ROOM PLACEMENT	SPECIAL INSTRUCTIONS	DURATION OF PRECAUTIONS
			Precautions and 6.30, Meningococcal Meningitis or Meningococemia Exposure Follow-up.	
Metapneumovirus (Human) receiving inhaled Ribavirin therapy	Ribavirin Precautions (Respiratory for room placement) and Contact/Droplet	Private room, negative air pressure. Keep door closed.	<ul style="list-style-type: none"> • Every time, upon entry into room, follow Contact/Droplet Precautions. • For more information see ICM Policy 5.30, Contact Precautions and 5.41, Droplet Precautions. • Instruct patient to perform hand hygiene after contact with respiratory secretions. <i>Ribavirin Precautions Include:</i> <ul style="list-style-type: none"> • Pregnant healthcare workers must not care for patient. • N95 mask for persons entering room during a treatment. • Remove your soft contacts or wear goggles • Follow instructions on the Ribavirin precautions sign. • For more information regarding Ribavirin contact the RT shift supervisor (37709) 	Ribavirin Precautions for the duration of inhaled Ribavirin therapy. Contact / Droplet Precautions for the duration of symptoms.
Metapneumovirus (Human)	Contact/Droplet	Private Room No negative air pressure required.	<ul style="list-style-type: none"> • Every time, upon entry into room, follow Contact/Droplet Precautions. • For more information see ICM Policy 5.30, Contact Precautions and 5.41, Droplet Precautions. • Instruct patient to perform hand hygiene after contact with respiratory secretions. 	Duration of symptoms.
Methicillin-Resistant Staphylococcus aureus (MRSA) – Infection	Contact	Private room or may cohort with other MRSA patient	<ul style="list-style-type: none"> • Review record for previous six months. If positive culture (other than nares) place on precautions. • For more information see ICM Policy 5.30, Contact Precautions 	Duration of hospitalization.

IF A DISEASE OR CONDITION IS NOT LISTED IN THIS TABLE USE STANDARD PRECAUTIONS				
DISEASE/CONDITION	PRECAUTIONS	ROOM PLACEMENT	SPECIAL INSTRUCTIONS	DURATION OF PRECAUTIONS
Multi-Drug Resistant Organism (MDRO) – Infection or Colonization (ex., ESBLs, resistant <i>S. pneumoniae</i>, <i>Burkholderia cepacia</i>, resistant gram negative rods, <i>Acinetobacter</i>)	Contact	Private room or may cohort with another patient with the same resistant organism	Call Infection Control pager #16167 if additional guidance required. Reviewed case by case by Infection Control. For more information see ICM Policy 5.30, Contact Precautions	<ul style="list-style-type: none"> • Until all devices are DC'd. • Patient does not soil environment • Antibiotic therapy completed.
Mumps (infectious parotitis)	Droplet	Private room, no special ventilation required. Door may remain open.	<ul style="list-style-type: none"> • Non-immune persons should not enter room. • Surgical style mask with face shield or surgical style mask plus goggles for persons entering room. • Surgical style mask for patients when leaving room. • Promptly notify the IPCD,* x 5-1106 or pager 16167 • Report promptly to Santa Clara County Health Department (408) 885-4214. • For more information see ICM Policy 5.41, Droplet Precautions. 	Until 9 days after the onset of swelling
<i>Neisseria meningitides</i>, invasive disease (meningitis, pneumonia, sepsis) <i>See Meningitis</i>				
Norovirus (Norwalk virus) diarrhea	Contact	Private room	<ul style="list-style-type: none"> • Avoid use of shared electronic thermometers • For more information see ICM Policy 5.30, Contact Precautions 	48 hours after diarrhea has resolved
Parainfluenza receiving inhaled Ribavirin therapy	<ul style="list-style-type: none"> • Droplet • Respiratory 	Private Room No negative air pressure required.	<ul style="list-style-type: none"> • Surgical style mask with/without face shield plus goggles for persons entering room. • Every time, upon entry into room, follow Droplet Precautions. • For more information see ICM Policy 5.41, Droplet Precautions. • Instruct patient to perform hand hygiene after contact with respiratory secretions. 	Duration of illness or treatment

IF A DISEASE OR CONDITION IS NOT LISTED IN THIS TABLE USE STANDARD PRECAUTIONS				
DISEASE/CONDITION	PRECAUTIONS	ROOM PLACEMENT	SPECIAL INSTRUCTIONS	DURATION OF PRECAUTIONS
Parainfluenza no inhaled Ribavirin therapy	Droplet	Any room	<ul style="list-style-type: none"> For more information see <i>ICM</i> Policy 5.41, Droplet Precautions 	Duration of illness
Parvovirus B19 – patient in aplastic crisis	Droplet	Private room, no special ventilation required. Door may remain open.	<ul style="list-style-type: none"> Pregnant HCWs should not enter the room. Surgical style mask with face shield or surgical style mask plus goggles for persons entering room. Surgical style mask for patients when leaving room. Promptly notify the IPCD,* x 5-1106 or pager 16167 Report promptly to Santa Clara County Health Department (408) 885-4214. For more information see <i>ICM</i> Policy 5.41, Droplet Precautions. 	For 7 days
Parvovirus B19 (fifth disease or Erythema infectiosum)- in an immunocompromised patient with chronic disease	Droplet	Private room, no special ventilation. Door may remain open.	<ul style="list-style-type: none"> Pregnant HCWs should not enter the room. Surgical style mask with face shield or surgical style mask plus goggles for persons entering room. Surgical style mask for patients when leaving room. Promptly notify the IPCD,* x 5-1106 or pager 16167 Report promptly to Santa Clara County Health Department (408) 885-4214. For more information see <i>ICM</i> Policy 5.41, Droplet Precautions. 	For duration of hospitalization
Pediculosis (Lice)	Contact	Private room	For more information see <i>ICM</i> Policy 5.30, Contact Precautions and 6.50, Pediculosis Exposure Follow-up .	For 24 hours after treatment is completed.

IF A DISEASE OR CONDITION IS NOT LISTED IN THIS TABLE USE STANDARD PRECAUTIONS				
DISEASE/CONDITION	PRECAUTIONS	ROOM PLACEMENT	SPECIAL INSTRUCTIONS	DURATION OF PRECAUTIONS
Poliomyelitis	Contact	Private room	<ul style="list-style-type: none"> Promptly notify the IPCD,*x 5-1106 or pager 16167 For more information see <i>ICM</i> Policy 5.30, Contact Precautions 	
Q Fever	Standard	Any room		
Rabies	Droplet	Private room, no special ventilation required. Door may remain open.	<ul style="list-style-type: none"> Surgical style mask with face shield or surgical style mask plus goggles for persons entering room. Surgical style mask for patients when leaving room. Promptly notify the IPCD,*x 5-1106 or pager 16167 Report promptly to Santa Clara County Health Department (408) 885-4214. For more information see <i>ICM</i> Policy 5.41, Droplet Precautions. 	Duration of hospitalization
Rash, generalized, etiology unknown	Respiratory and Contact	Private room with negative air pressure and an ante room. Keep door closed.	<ul style="list-style-type: none"> N95 mask for staff entering the room. Only staff immune to childhood illnesses should enter room. For more information, see <i>ICM</i> Policy 5.30, Contact Precautions 	To be determined when diagnosis is made
Resistant Microorganisms, i.e. Resistant Pseudomonas, Burkholderia, ESBL, etc., See MDRO				
Respiratory Syncytial Virus (RSV) in an immunocompromised host receiving Ribavirin Therapy	Ribavirin Precautions and Contact/Droplet	Private room, negative air pressure (Respiratory for room placement). Keep door closed.	<ul style="list-style-type: none"> Every time, upon entry into room, follow Contact/Droplet Precautions. For more information see <i>ICM</i> Policy 5.30, Contact Precautions and 5.41, Droplet Precautions. Pregnant healthcare workers must not care for patient. <p><i>Ribavirin Precautions Include:</i></p> <ul style="list-style-type: none"> N95 mask for persons entering room during a treatment. Gloves and gown must be worn when in contact with the 	Ribavirin Precautions for the duration of inhaled Ribavirin therapy. Contact/Droplet Precautions for duration of symptoms.

IF A DISEASE OR CONDITION IS NOT LISTED IN THIS TABLE USE STANDARD PRECAUTIONS				
DISEASE/CONDITION	PRECAUTIONS	ROOM PLACEMENT	SPECIAL INSTRUCTIONS	DURATION OF PRECAUTIONS
			<p>patient.</p> <ul style="list-style-type: none"> Remove your soft contacts or wear goggles Follow instructions on the Ribavirin precautions sign. For more information regarding Ribavirin contact the RT shift supervisor (37709) 	
Respiratory Syncytial Virus (RSV) in an immunocompromised patient not receiving inhaled Ribavirin therapy	Contact/Droplet	Private Room No negative air pressure required	<ul style="list-style-type: none"> Every time, upon entry into room, follow Contact/Droplet Precautions. Instruct patient to perform hand hygiene after contact with respiratory secretions. Staff must not touch eyes. For more information see <i>ICM</i> Policy 5.30, Contact Precautions and 5.41, Droplet Precautions. 	Duration of Symptoms
Respiratory Syncytial Virus (RSV) in a patient with an intact immune system and not receiving inhaled Ribavirin therapy	Droplet	Any room Duration of Precautions Duration of Symptoms	<ul style="list-style-type: none"> Every time, upon entry into room, follow Contact/Droplet Precautions. Instruct patient to perform hand hygiene after contact with respiratory secretions. Staff must not touch eyes. For more information see <i>ICM</i> Policy 5.30, Contact Precautions and 5.41, Droplet Precautions. 	Duration of Symptoms
Ringworm (tinea)	Standard	Any room		
Rotavirus See Gastroenteritis				
Rubella (German measles)	Droplet	Private room, no special ventilation required. Door may remain open.	<ul style="list-style-type: none"> Surgical style mask with face shield or surgical style mask plus goggles for persons entering room. Patient to wear surgical style mask when leaving room. Promptly notify the IPCD,* x 5-1106 or pager 16167 Report promptly to Santa Clara County Health Department (408) 885-4214. For more information see <i>ICM</i> Policy 5.41, Droplet Precautions and 6.21, 	Until 7 days after onset of rash. Infants with congenital rubella shed virus for months

IF A DISEASE OR CONDITION IS NOT LISTED IN THIS TABLE USE STANDARD PRECAUTIONS				
DISEASE/CONDITION	PRECAUTIONS	ROOM PLACEMENT	SPECIAL INSTRUCTIONS	DURATION OF PRECAUTIONS
			Rubella Exposure Follow-up.	
Rubeola, See Measles				
Salmonella, See gastroenteritis				
SARS (Severe Acute Respiratory Syndrome)	Respiratory and Contact	Private, negative air pressure room with ante-room. Keep door closed.	<ul style="list-style-type: none"> • N95 respirator mask for personnel entering room. • Requires fit testing by designated individual. See manager for more information. • Patient to wear surgical style mask when leaving room. • Promptly notify the IPCD* x 5-1106 or pager 16167 • Report promptly to Santa Clara County Health Department (408) 885-4214. • For more information see ICM Policy 6.90, SARS Precautions/Isolation 	Duration of hospitalization
Scabies	Contact	Private room until treatment is completed	<ul style="list-style-type: none"> • Persons with crusted (Norwegian) scabies generally must be treated at least twice, a week apart • Persons with crusted (Norwegian) scabies require contact precautions until skin scraping is negative <p>For more information see ICM Policy 5.30, Contact Precautions</p>	For 24 hours after treatment is completed See note in "Special Instructions"
Shigella, See Gastroenteritis				
Smallpox	Respiratory and Contact	Private negative air pressure room with anteroom	<ul style="list-style-type: none"> • N 95 respirator mask for staff entering room. • Requires fit testing by designated individual (see manager).Every time, upon entry into room, follow Contact Precautions. Promptly notify the IPCD* x 5-1106 or pager 16167. • Refer to Disaster Response and Recovery Guide. 	Do NOT discharge from hospital until determined no longer infectious. (Disappearance of scabs generally 14-28 days.)
Staphylococcus aureus Disease	Standard	Any room	May need Contact Precautions if wound drainage is not adequately contained with dressing.	Duration of illness if Contact Precautions needed
Streptococcal Disease				

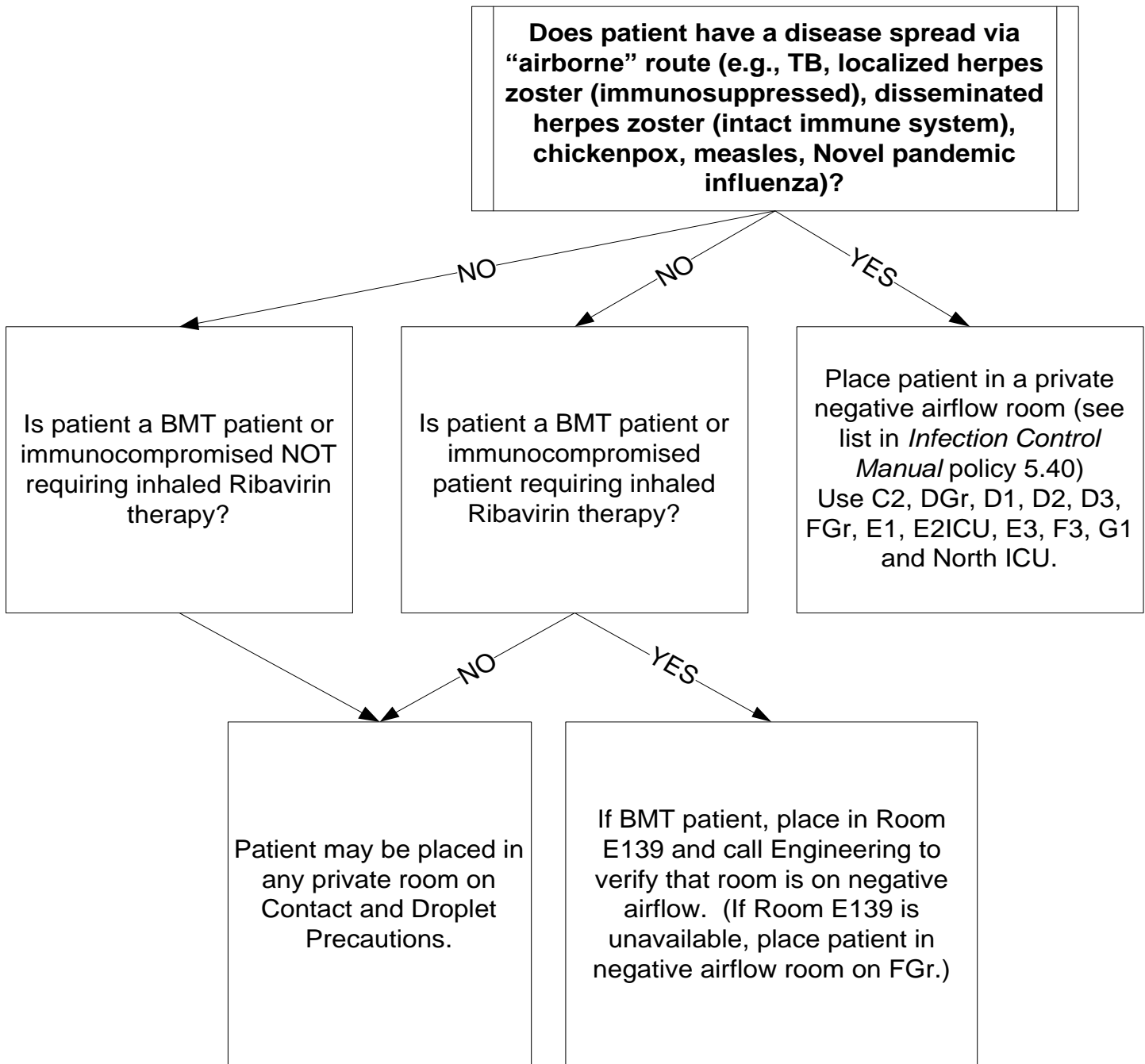
IF A DISEASE OR CONDITION IS NOT LISTED IN THIS TABLE USE STANDARD PRECAUTIONS				
DISEASE/CONDITION	PRECAUTIONS	ROOM PLACEMENT	SPECIAL INSTRUCTIONS	DURATION OF PRECAUTIONS
			hours prior to discharge. <ul style="list-style-type: none"> Do not discharge patient until approval obtained from Santa Clara County Health Dept. For more information see ICM Policy 5.40, Respiratory Precautions, 6.70, Tuberculosis Precautions and 9.0, Pulmonary Tuberculosis Exposure Control Plan. 	
Tularemia	Standard	Any room		
Typhoid Fever (<i>Salmonella typhi</i>), See Gastroenteritis				
Vaccinia, Generalized	Contact	Private room.		
Valley Fever (Coccidiomycosis)	Standard	Any room		
Vancomycin resistant enterococcus (VRE) – Infection or Colonization or with a history of during a prior hospitalization	Contact	Private room or room with VRE patient only	<ul style="list-style-type: none"> Review record for previous six months. If positive culture (other than rectal swab) place on precautions. Every time, upon entry into room, follow Contact Precautions. For more information see ICM Policy 5.30, Contact Precautions 	Duration of hospitalization
Vancomycin intermediate/resistant Staphylococcus aureus (VISA)	Contact	Private room	For more information see ICM Policy 5.30, Contact Precautions	Duration of hospitalization
Varicella, See Chickenpox				
Varicella – Zoster: See Herpes Zoster				
Viral Fevers (Dengue, Yellow fever, Colorado Tick fever)	Standard	Any room		
West Nile Virus	Standard	Any room	<ul style="list-style-type: none"> Report immediately to IPCD* at x 5-1106 or pager 16167. Report promptly to Santa Clara County Health Department (408) 885-4214. 	
Whooping Cough: See Pertussis				
Wound Infections <ul style="list-style-type: none"> Major (where drainage is not 	Contact	Private Room	<ul style="list-style-type: none"> Contact Precautions necessary if the patient's 	Until drainage has stopped or

IF A DISEASE OR CONDITION IS NOT LISTED IN THIS TABLE USE STANDARD PRECAUTIONS				
DISEASE/CONDITION	PRECAUTIONS	ROOM PLACEMENT	SPECIAL INSTRUCTIONS	DURATION OF PRECAUTIONS
<p>adequately contained with a dressing)</p> <ul style="list-style-type: none"> • Minor or limited or contained 	<p><u>Standard</u></p>	<p>Any Room</p>	<p>hygiene is poor and soiling of the environment is likely.</p> <ul style="list-style-type: none"> • For more information see <u>ICM Policy 5.30, Contact Precautions.</u> <p>Dressing adequately contains all drainage.</p>	<p>can be contained with a dressing</p>
<p>Yersiniosis See Plague</p>				

* Infection Prevention & Control Department

Appendix B

**QUICK REFERENCE GUIDE FOR PLACEMENT OF PATIENTS:
NEGATIVE AIRFLOW ROOMS**



Appendix C

**LIMITED NEGATIVE AIRFLOW ROOMS
PRIORITIZATION SCHEME**

- 1. Ribavirin Therapy**
- 2. Chickenpox/Disseminated zoster**
- 3. Smear Positive Tuberculosis**
- 4. R/O Tuberculosis**

Appendix D

**QUICK REFERENCE GUIDE FOR PLACEMENT OF PATIENTS:
POSITIVE AIRFLOW ROOMS**

